



VASANTA

I N N O P A R K





VASANTA INNOPARK

F&B SHOPHOUSE (WITH RETAIL PROMENADE)
52 UNIT - 4 STY @ 75 SQM (5X15 M)
--> DOUBLE FACING

AMENITIES SHOPHOUSE
TYPE A : 2 UNIT -
4 STY @ 90 SQM (6X15 M)

AMENITIES SHOPHOUSE
TYPE B : 4 UNIT - 4 STY @ 75 SQM (5X15 M)

AMENITIES SHOPHOUSE
TYPE C : 10 UNIT - 3 STY @ 75 SQM (5X15 M)
AMENITIES SHOPHOUSE
TYPE B : 4 UNIT - 4 STY @ 75 SQM (5X15 M)

AMENITIES SHOPHOUSE
TYPE C : 18 UNIT - 3 STY @ 75 SQM (5X15 M)

AMENITIES SHOPHOUSE
TYPE A : 4 UNIT -
4 STY @ 90 SQM (6X15 M)

AMENITIES SHOPHOUSE
TYPE A : 2 UNIT - 4 STY @ 90 SQM (6X15 M)

AMENITIES SHOPHOUSE
TYPE D : D62- 1 UNIT - 4 STY
LAND AREA : 372,75 SQM
BUILDING AREA : 1491 SQM

AMENITIES SHOPHOUSE
TYPE D : D91- 1 UNIT - 4 STY
LAND AREA : 132 SQM
BUILDING AREA : 528 SQM

AMENITIES SHOPHOUSE
TYPE B : 6 UNIT - 4 STY @ 75 SQM (5X15 M)

AMENITIES SHOPHOUSE
TYPE C : 29 UNIT - 3 STY @ 75 SQM (5X15 M)

AMENITIES SHOPHOUSE
TYPE B : 9 UNIT - 4 STY @ 75 SQM (5X15 M)

AMENITIES SHOPHOUSE
TYPE A : 1 UNIT - 4 STY @ 90 SQM (6X15 M)

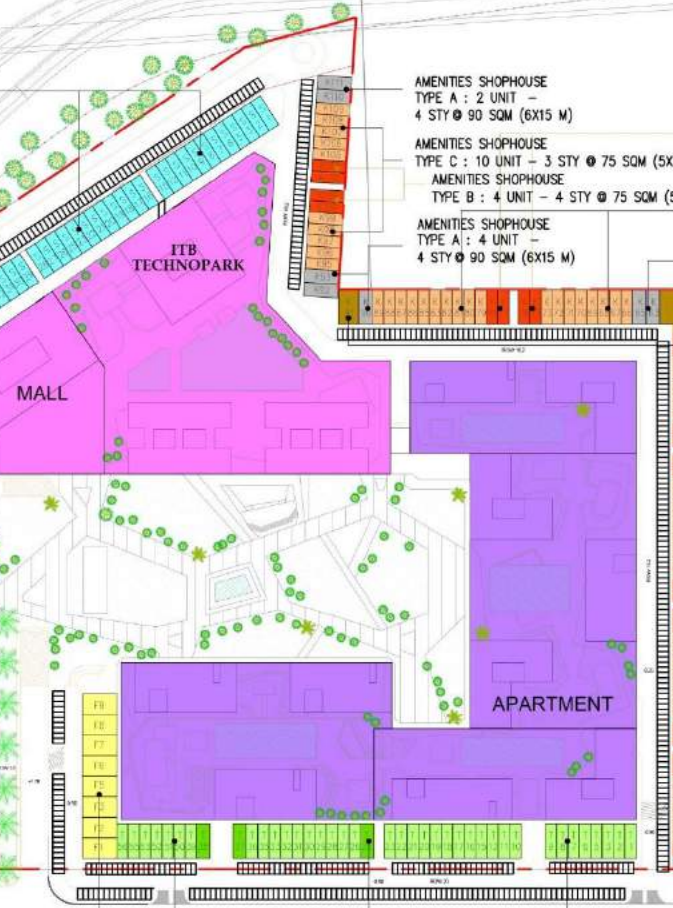


F&B SHOPHOUSE (WITH RETAIL PROMENADE)
13 UNIT - 3 STY @ 75 SQM (5X15 M)
--> SINGLE FACING

F&B SHOPHOUSE (WITH RETAIL PROMENADE)
F 85 - 3STY
LAND AREA : 339,6 SQM
BUILDING AREA : 1018,8 SQM

F&B SHOPHOUSE (WITH RETAIL PROMENADE)
F 108 - 3STY
LAND AREA : 180 SQM (12X15)
BUILDING AREA : 540 SQM

F&B SHOPHOUSE (WITH RETAIL PROMENADE)
19 UNIT - 3 STY @ 75 SQM (5X15 M)
--> SINGLE FACING



BUSINESS DISTRICT
EXISTING OC = 8 --> BLOK A = 8

SHOPHOUSE
COMMERCIAL = 39 --> BLOK B = 40
AMENITIES = 93 --> BLOK D = 90
F&B = 87 --> BLOK F = 86
TOTAL SHOPHOUSE (DESIGN) = 216

BUSINESS DISTRICT
B UNIT - 8 STY
@ 135 SQM/FL (9X15 M)

COMMERCIAL SHOPHOUSE (FACING THE MAIN TOULEVARD)
TYPE A : 3 UNIT - 4 STY @ 90 SQM (6X15 M)
TYPE T : 38 UNIT - 4 STY @ 75 SQM (5X15 M)



VASANTA
INNOPARK

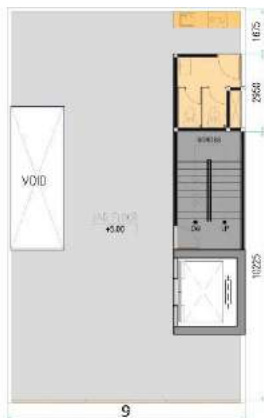
FUJI AREA - BUSINESS DISTRICT

Facing The Main Street

(8 sty ; 135 sqm)



1st FLOOR

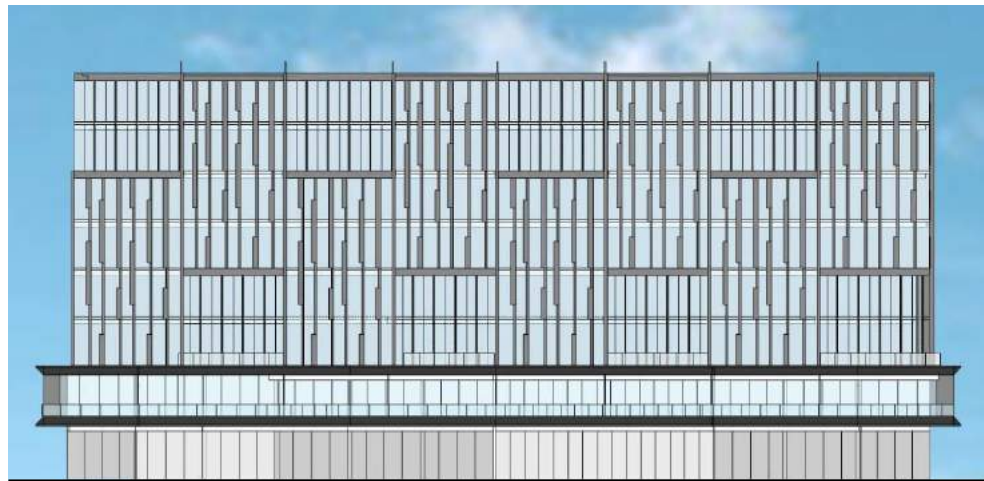


2nd FLOOR



3rd-8th FLOOR

UNIT BUSINESS DISTRICT
OPEN TO MAIN STREET

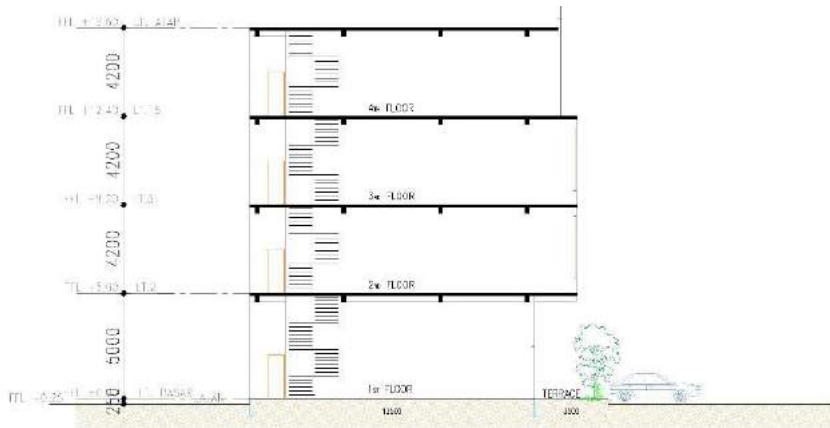
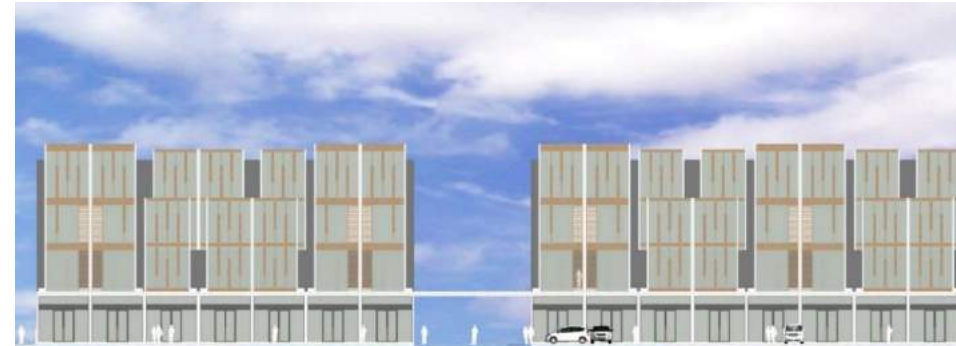
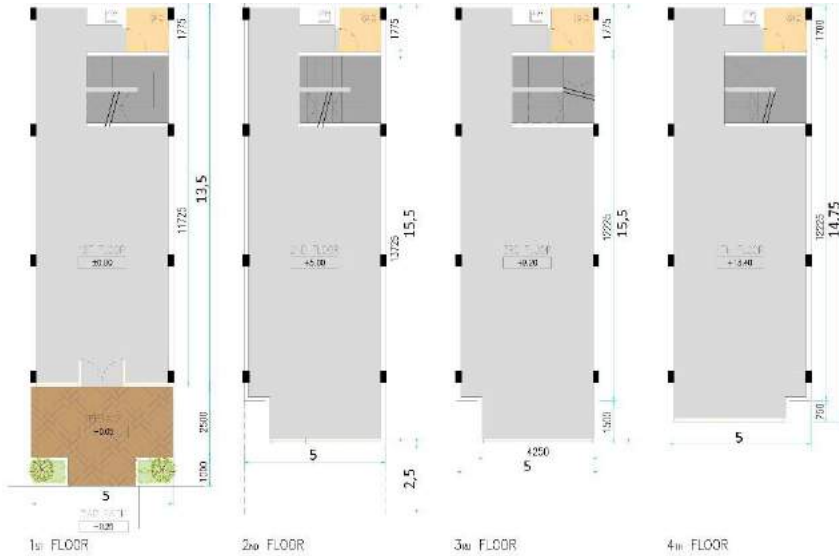




VASANTA
INNOPARK

TSUBAKI AREA - COMMERCIAL SHOPHOUSE

Facing The Main Boulevard
(4 sty ; 75 or 90 sqm) ; Land Area = 84,05 sqm

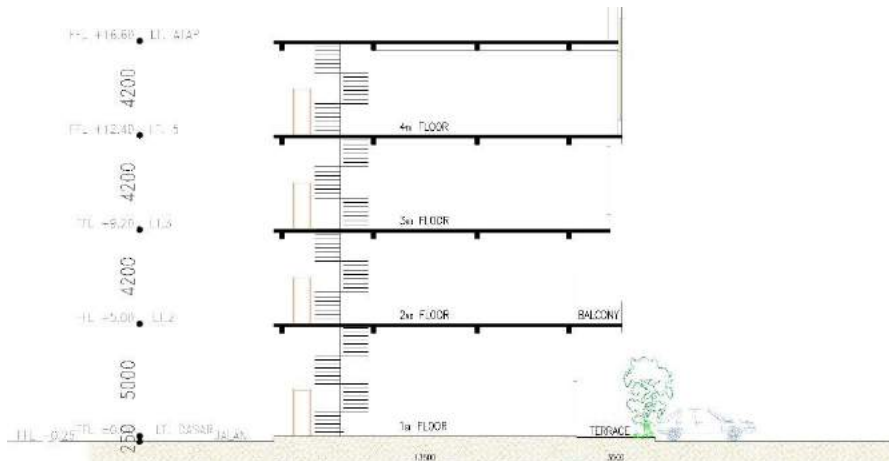
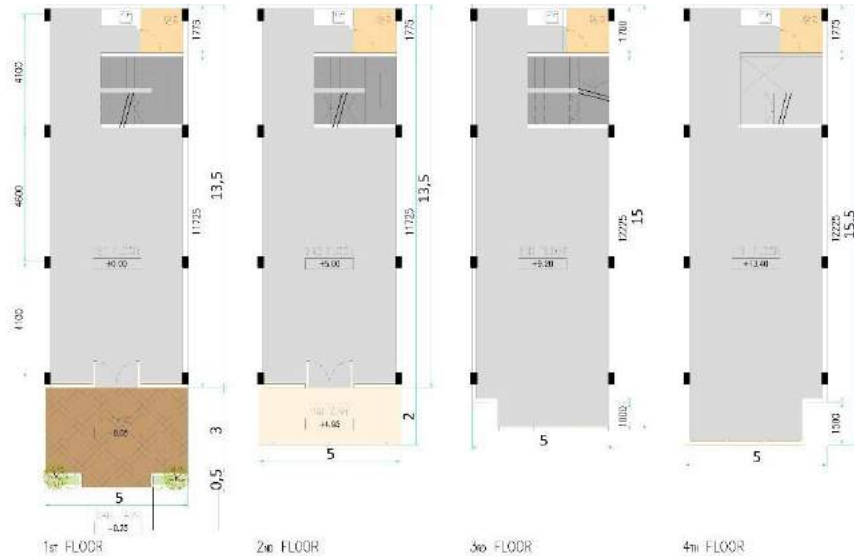




VASANTA
INNOPARK

KOSAI AREA - AMENITIES SHOPHOUSE

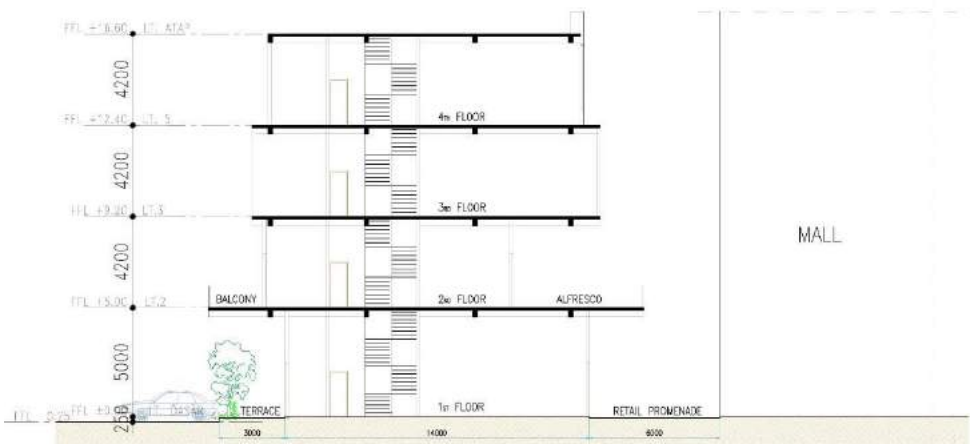
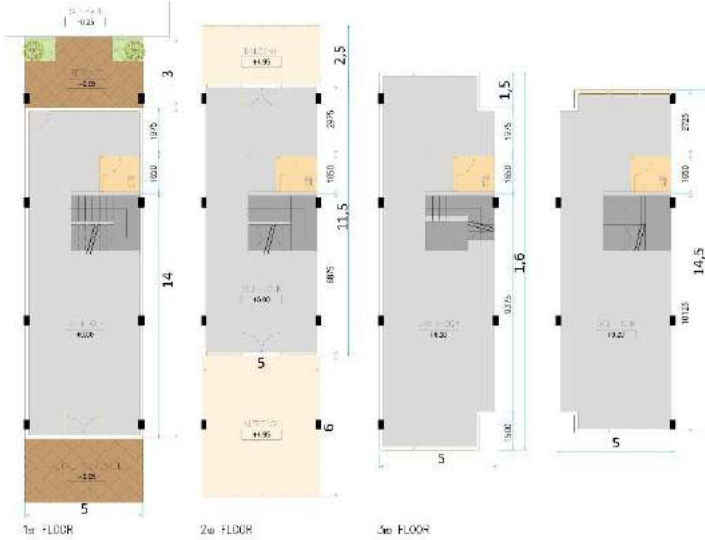
(3 & 4 sty ; Land Area : 75 & 90 sqm)





VASANTA
INNOPARK

SUMIRE AREA - F&B 4 sty SHOPHOUSE Double Facing to Retail Promenade (Mall) & Street (4 sty ; 75 sqm)





VASANTA
INNOPARK

SUMIRE AREA - F&B 3 sty SHOPHOUSE Single Facing (3 sty ; 75 sqm)

